



Children Sub-Committee

Date:	Wednesday, 16 December 2015
Time:	6.00 pm
Venue:	Committee Room 1 - Wallasey Town Hall

Contact Officer: Lyndzay Roberts
Tel: 0151 691 8262
e-mail: lyndzayroberts@wirral.gov.uk
Website: <http://www.wirral.gov.uk>

AGENDA

- 1. MINUTES OF THE CHILDREN SUB-COMMITTEE (Pages 1 - 6)**

To approve the accuracy of the minutes of the Children Sub-Committee held on 23 September 2015.
- 2. MEMBERS' CODE OF CONDUCT - DECLARATION OF INTERESTS**

Members are asked to consider whether they have any disclosable pecuniary interests and/or any other relevant interest in connection with any item(s) on this agenda, if so, to declare them and state the nature of the interest.
- 3. CHILDREN AND YOUNG PEOPLE'S DEPARTMENT ANNUAL STATUTORY COMPLAINTS REPORT 2014/2015 (Pages 7 - 18)**
- 4. SCHOOLS STANDARD REPORT - ATTAINMENT AT GCSE AND A LEVEL 2015**

To receive a presentation.
- 5. POST 16 QUALIFICATIONS AND THE IMPACT ON NEETS - UPDATE (Pages 19 - 30)**
- 6. WORK PROGRAMME FOR FUTURE MEETINGS (Pages 31 - 38)**

This page is intentionally left blank

CHILDREN SUB-COMMITTEE

Wednesday, 23 September 2015

Present:

Councillors	W Clements	M McLaughlin
	A Davies	T Norbury
	P Hayes	W Smith

Apologies

Councillor	A Brighouse
	H Shoebridge

1 MEMBERS' CODE OF CONDUCT - DECLARATION OF INTERESTS

Members of the Sub-Committee were asked to consider whether they had any disclosable pecuniary interests and/or any other relevant interest in connection with any items on the agenda and if so, to declare them and state the nature of the interest.

Councillor W Clements declared a non pecuniary interest by virtue of her employment in an Early Years Centre and also that she sits on the Advisory Board for West Wirral Children's Centre.

Councillor T Norbury declared a non pecuniary interest by virtue that his sister is employed at Children's Services.

2 APPOINTMENT OF CHAIR

On a motion by Councillor Wendy Clements and seconded by Councillor Angela Davies it was –

Resolved – That Councillor Moira McLaughlin be appointed Chair of the Children Sub-Committee.

3 APPOINTMENT OF VICE CHAIR

On a motion by Councillor Moira McLaughlin and seconded by Councillor Angela Davies it was –

Resolved – That Councillor Wendy Clements be appointed Vice Chair of the Children Sub-Committee.

4 **MINUTES OF THE ATTAINMENT SUB-COMMITTEE**

Resolved – That the accuracy of the minutes of the Attainment Sub-Committee held on 4 March 2015 be approved as a correct record.

5 **TERMS OF REFERENCE**

The Children Sub-Committee's Terms of Reference, which had been considered and approved by the Families and Wellbeing Policy and Performance Committee on 30 June 2015, were submitted for Members' information.

Resolved – That the Terms of Reference for the Children Sub-Committee be noted.

6 **EARLY YEARS AND CHILDREN'S CENTRES**

The Director of Children's Services reported that the Early Years and Children's Centre Review, which outlined a new delivery model, had been agreed by Cabinet on 27 July 2015.

Members were advised that the new delivery model was supported by an outcomes framework to ensure that Wirral's youngest children have the best possible start in life which would be evidenced through their readiness for school and improvements in the numbers of children achieving a Good Level of Development in the Early Years Foundation Stage.

The Senior Early Years Manager was in attendance at the meeting and informed Members that the service was linked with the Wirral Plan: A 2020 Vision and that the emphasis would be on ensuring that every child would have the emotional, social and development skills to be ready to start school and learn.

The model agreed was a weighted funded model which took account of levels of deprivation and need across pre-determined reach footprints within constituency areas. Members were advised that outcome focused provision would be delivered in an integrated way with partners in local communities through three hubs, six satellite buildings and commissioned services included those through two nursery schools. The delivery model would be able to respond to changes to government guidance, work effectively with key partners, offer a more targeted provision based on need and realign the service to enable it to more easily and readily adapt in the future.

Members were informed that ongoing communication and consultation with parents of children under 5 years, prospective parents, parents and key stakeholders would take place.

The Senior Early Years Manager advised that the delivery model would enable Wirral to work towards any changes from a Government level and that Wirral would be in a position to be more adaptive to the future.

The Chair proposed that a task and finish group be established to consider how policies and services could be developed and ensure the work carried out is in line with that undertaken by Local Members of Parliament.

Resolved –

(1) That the report be noted.

(2) That a task and finish group be established to consider how policies and services could be developed and ensure the work carried out is in line with that undertaken by Local Members of Parliament.

7 SPECIALIST SERVICES REDESIGN

The Director of Children's Services provided Members with details of the re-design of Specialist Services (Children's Social Care).

The Head of Service informed Members that the re-design of Specialist Services was driven by the need to improve outcomes for children and that a clearer remit of social work functions would assist partnership working, particularly with education and health colleagues. There had been an emphasis on creating smaller social work teams to allow for closer management oversight. The focus was on permanency and the four dedicated children in care teams would allow social workers more focused time to offer more practical and emotional support to looked after children. The new team reconfiguration would allow for better planning with young people to return home, where safe and feasible, move into other permanent arrangements or into care leaver arrangements where appropriate to do so. There had been no reduction in social work posts and over 85% of cases had been moved over into the Children in Care Service.

As part of the re-design of the teams, a comprehensive caseload weighting system was being put in place which would provide support to ensure that caseloads are manageable for social workers and that staff have the capacity and experience to work with individual children and families to identify and respond to their level of need.

In response to questions from Members, the Head of Service advised that an average caseload was now between 23 and 26 children and that work was being undertaken with newly qualified social workers to ensure their cases were not too complex. Members were also advised that the data collected enabled managers to view live assessments, tasks that needed completing and by what timescales. Data was also being collected on a weekly basis.

Further to questions from Members, the Head of Service advised that no additional resources were available for refugees and asylum seekers and that they would be dealt with as and when they had been referred.

Resolved – That the Director of Children’s Services be thanked for the report and that the report be noted.

8 SCHOOL STANDARDS REPORT, INCLUDING IMPACT ON 'NARROWING THE GAP' - OFFICER REPORT

The Director of Children’s Services provided a presentation upon ‘Narrowing the Gap’.

Members were advised that in respect of the percentage of good level of development 2015, Wirral had increased by nearly 7% from last year and was the second best in the region and that the overall gap in attainment at the earliest assessment stage had decreased by 2.2%. At Key Stage 1 children had achieved Level 2+ and there had been an improvement in each area. Age related expectations from 2013 to 2015 were almost all above the national standard and children who received Free School Meals who didn’t achieve age related expectations had improved over the last two years. During 2015, Children Looked After in Key Stage 1 had increased in attainment for all in Borough children and in Key Stage 2 Grammar Punctuation and Spelling had increased by 4 percentage points, writing by 2 percentage points and mathematics by 1 percentage point. Also in 2015 Free School Meal Pupils who did not achieve Age Related Expectations had decreased since 2013. Children Looked After in Key Stage 2 had improved in each area and there had been a significant increase of two levels of progress in reading.

In respect of provisional GCSE results for 2015, eight Wirral schools results had decreased from 2014, two schools were below the current Department of Education floor target and there had been a slight deterioration in provisional GCE results which was a national trend however the number of entries had increased.

Resolved – That the Director of Children’s Services be thanked for her presentation.

9 **WORK PROGRAMME FOR FUTURE MEETINGS**

Members considered an item in respect of exception reports highlighting positive and negative aspects arising from school Ofsted inspection reports to be considered at a future meeting.

In addition Members also considered arranging visits to schools with the widest gap in attainment as well as schools which had been more successful in narrowing the gap.

Resolved –

- (1) That the work programme continue to be developed**
- (2) That an item in respect of exception reports, highlighting positive and negative aspects arising from school Ofsted inspection reports, be considered at a future meeting.**
- (3) That arrangements be made for Members to visit schools with the widest gap in attainment as well as schools which had been more successful in narrowing the gap.**

This page is intentionally left blank

WIRRAL COUNCIL

Children's Sub Committee

16 December 2015

SUBJECT:	Annual Complaint Report
WARD/S AFFECTED:	All
REPORT OF:	Director of Children's Services
RESPONSIBLE PORTFOLIO HOLDER:	Councillor Tony Smith
KEY DECISION?	No

1.0 EXECUTIVE SUMMARY

- 1.1 This report provides information on representations and complaints received by children's specialist services within the Children and Young People's Department for the year 1st April 2014 to 31st March 2015.
- 1.2 The report gives an overview of complaint trends, performance and areas for development.

2.0 BACKGROUND AND KEY ISSUES

- 2.1 The Children Act 1989 Representations Procedure (England) Regulations 2006 and associated guidance "Getting the Best from Complaints" came into force on 1st September 2006 and underpins the Branch's Complaints Procedure.
- 2.2 The Regulations provide a statutory framework for dealing with representations relating to statutory social services functions under Part 3 of the Children Act 1989; and certain functions under the Adoption Support Regulations 2005 and Special Guardianship Support Regulations 2005.
- 2.3 The Regulations stipulate that an Annual Report is produced and presented to staff and appropriate Local Authority Committees. The report should also be available to the Regulator and the general public.

3.0 RELEVANT RISKS

- 3.1 Risk of reputational damage if an Annual Complaint Report is not published in line with regulations.

4.0 OTHER OPTIONS CONSIDERED

4.1 N/A

5.0 CONSULTATION

5.1 N/A

6.0 OUTSTANDING PREVIOUSLY APPROVED ACTIONS

6.1 None

7.0 IMPLICATIONS FOR VOLUNTARY, COMMUNITY AND FAITH GROUPS

7.1 None

8.0 RESOURCE IMPLICATIONS: FINANCIAL; IT; STAFFING; AND ASSETS

8.1 None

9.0 LEGAL IMPLICATIONS

9.1 Statutory regulations stipulate that an annual complaint report must be made available to the public and the regulator (Local Government Ombudsman).

10.0 EQUALITIES IMPLICATIONS

10.1 Has the potential impact of your proposal(s) been reviewed with regard to equality?

No because there is no relevance to equality.

11.0 CARBON REDUCTION AND ENVIRONMENTAL IMPLICATIONS

11.1 None

12.0 PLANNING AND COMMUNITY SAFETY IMPLICATIONS

12.1 None

13.0 RECOMMENDATION/S

13.1 That the committee note the report which will be made available on the Council website.

14.0 REASON/S FOR RECOMMENDATION/S

14.1 Regulatory requirement.

REPORT AUTHOR: Simon Garner
Corporate Safeguarding Manager

Telephone: (0151) 666 5575
Email: simongarner@wirral.gov.uk

APPENDICES

Appendix 1 – Annual Complaint Report for statutory children’s complaints 2014/15

BACKGROUND PAPERS/REFERENCE MATERIAL

None

BRIEFING NOTES HISTORY

Briefing Note	Date
None	

SUBJECT HISTORY (last 3 years)

Council Meeting	Date
None	

This page is intentionally left blank

CHILDREN AND YOUNG PEOPLE'S DEPARTMENT ANNUAL STATUTORY COMPLAINTS REPORT 2014/2015

The report gives an overview of complaint trends, performance and areas for development.

1. Background

- 1.1 The Children Act 1989 Representations Procedure (England) Regulations 2006 and associated guidance "Getting the Best from Complaints" came into force on 1st September 2006 and underpins the Branch's Complaints Procedure.
- 1.2 The Regulations stipulate that an Annual Report is produced and presented to staff and appropriate Local Authority Committees. The report should also be available to the Regulator and the general public.
- 1.3 The Regulations provide a statutory framework for dealing with representations relating to statutory social services functions under Part 3 of the Children Act 1989; and certain functions under the Adoption Support Regulations 2005 and Special Guardianship Support Regulations 2005.
- 1.4 The Regulations stipulate who may make a complaint; this is generally the young person themselves or an adult with either parental responsibility or day to day care of the child. For any other person the Department has the discretion to decide whether they 'qualify' to make a complaint.
- 1.5 For representations regarding functions outside of the Regulations; or for a person who does not qualify to make a statutory complaint the Branch operates within the remit of the Corporate Complaints Policy and Procedure.

2. Applying the Regulations

- 2.1 The Customer Resolution and Information team have ensured that only those complainants who 'qualify' under the Regulations and wishing to make a complaint regarding statutory services under Part 3 of the Children Act 1989 have been given access to the Children and Young People's Departmental Representations and Complaints Procedure.
- 2.2 During the reporting period 25 complainants wanting to register a formal Stage 2 complaint have been given information and advice as to why they do not qualify and were relevant have been signposted to other procedures/processes.
- 2.3 During the reporting period 105 representations were made which did not meet the criteria of the complaint regulations; these were acknowledged, registered as comments or feedback and forwarded to appropriate managers to respond to.

3. Resolved at First Contact

- 3.1 Seventeen complainants had their complaint resolved at first contact by the Customer Resolution and Information Team without the need to formally register a complaint. These cases were generally about difficulties in contacting workers or receiving the outcome of a decision; and the Customer Resolution and Information Team were able to facilitate a response within the same day.

4. Alternative Resolution

- 4.1 Three complainants who initially wanted to register a formal Stage 2 complaint agreed that the proactive involvement of the Customer Resolution and Information Team via alternative resolution would expedite a more timely resolution.

5. Registered Complaints

- 5.1 Throughout the 12 month reporting period the following complaints were registered:

91	Stage 1 Complaints - Local Resolution	<i>[compared to 100 in 13/14]</i>
3	Stage 2 complaints - Investigation	<i>[compared to 2 in 13/14]</i>
0	Stage 3 complaint - Independent Review Panel	<i>[compared to 0 in 13/14]</i>

- 5.2 The Local Government Ombudsman has forwarded 1 complaints which were made prematurely to them and asked us to consider them under the complaints procedure.

The Local Government Ombudsman undertook enquiries/investigations into 5 complaints and found the following:

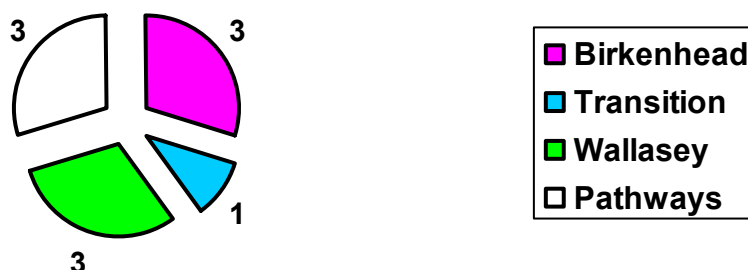
3 investigations complete - 2 = no fault found; 1 = outside LGO jurisdiction.
2 investigations ongoing – awaiting outcome

6. Stage 1 Complaints

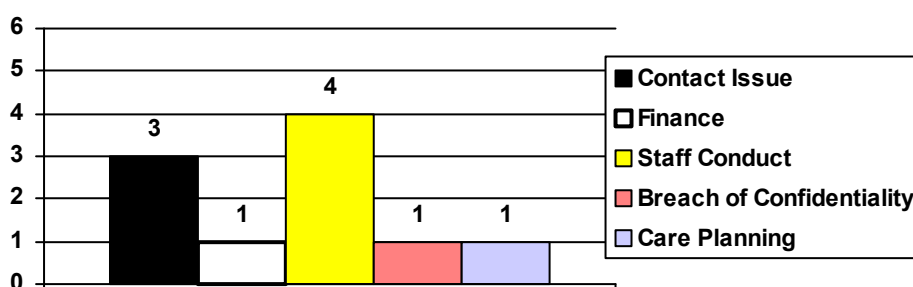
- 6.1 Of the 91 complaints registered at Stage 1 of the complaints procedure 10 were made by a child/young person (*compared to 10 in 13/14*) and 81 by an adult parent/carer (*compared to 90 in 12/13*). A breakdown of the stage 1 complaints is below:

6.2 **Stage One complaints made by a child or young person:**

District/Service with case responsibility



Reason for Complaint

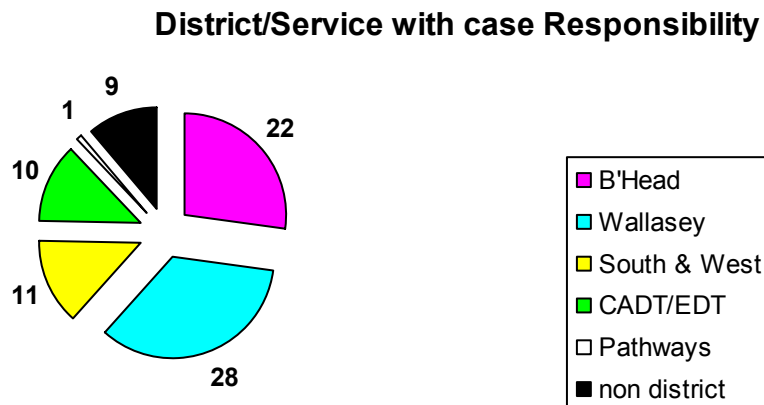


6.3 Stage 1 complaints made by the child/young person are handled by the Children's Complaints Officer with a focus on achieving resolution by working with the child/young person and the relevant manager.

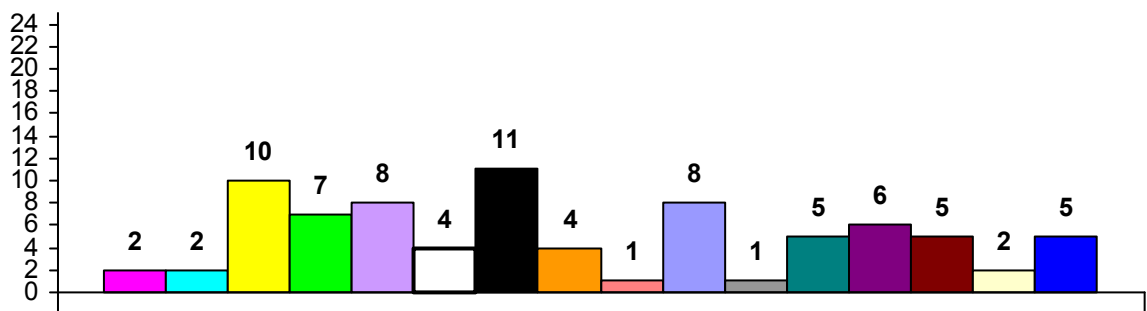
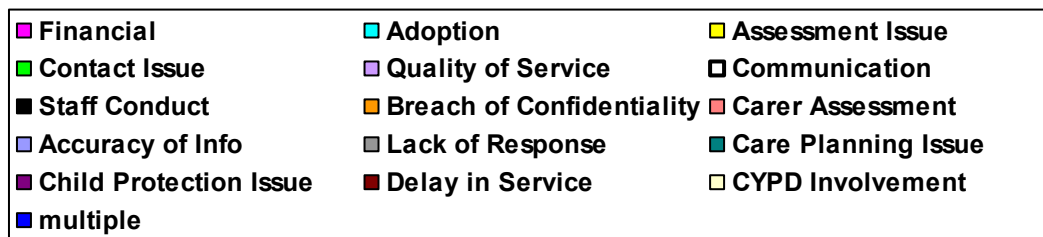
6.4 Independent Advocacy Services are available to all children/young people who make a complaint via the Department's contracts with Barnardos.

6.5 100% of complaints made by children/young people were resolved with the statutory timescale. The average time taken to complete/resolve the 10 complaints made by the child/young person was 7.1 working days (*compared to 19.7 working days in 13/14*).

6.6 **Stage One complaints made by an adult parent/carer:**



Reason for Complaint



6.6 Stage 1 complaints registered by an adult are dealt with by an appropriate manager within the District that holds case responsibility.

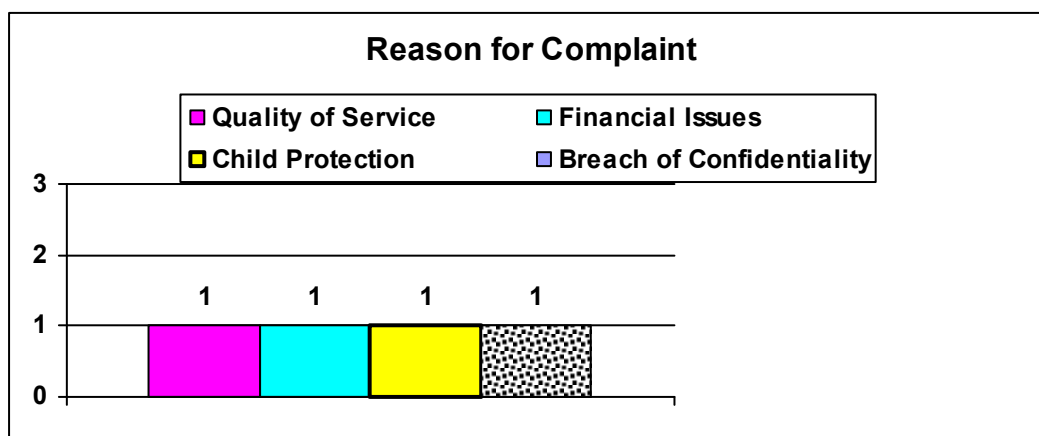
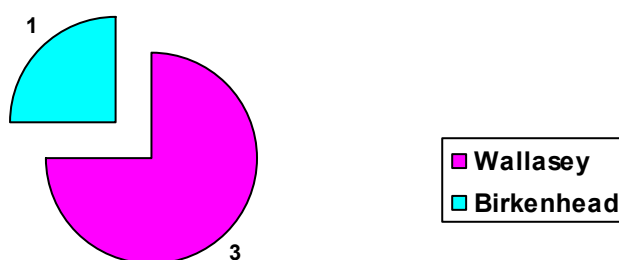
6.7 98% of stage 1 complaints were responded to within timescale. The average time taken to complete/resolve these complaints was 8.7 working days (compared to 10.7 working days in 13/14).

7. Stage 2 Complaints

One Stage 2 complaint was made by a young person; three stage 2 complaints were registered by adults with parental responsibility or day to day care of a child/young person receiving a service.

A breakdown of the complaints registered is below:-

District/Service with case responsibility



- 7.1 The ethnicity of all complainants who registered a complaint at stage 2 of the complaints procedure was white British, European, Irish or white other.
- 7.2 None of the complainants at Stage 2 of the complaints procedure was registered disabled.
- 7.3 The average time taken to complete the Stage 2 complaint investigations and provide a Departmental response was 60 working days (*compared to 65 in 2013/14*)
- 7.4 100% of Stage 2 complaint investigations were completed within the expected timescale of 65 working days.
- 7.5 All recommendations from Stage 2 investigations are action planned and reviewed by Performance Management Departmental Management Team to ensure the Department learns from complaints and to effect service improvement.

8. Stage 3 Complaints (Independent Review Panel)

- 8.1 No requests for an Independent Review Panel were received during the reporting period.

9. Learning from Complaints

- 9.1 Within the completed Stage Two investigations, there were 13 individual complaints, outcomes of these complaints were:-

- 3 were upheld (23%)
- 5 were partially upheld (38%)
- 5 were not upheld (38%)

- 9.2 The majority of recommendations made following these Stage 2 investigations were individual to the complaint. Recommendations for Departmental action have included:-

- To remind staff of the role of fathers even if children do not live with them.
- To remind staff about the importance of maintaining reasonable levels of communication with families.
- To consider implementing a working protocol between Specialist Services and MST.

10. Review of Effectiveness

The number of complaints received by children and young people continues to be low in comparison to the number of Looked After Children. Action taken following consultation with the Children in Care Council; including the provision of a freephone complaints number for children and links within the Right Side of Care website, has not resulted in a marked increase in the number of complaints received from children and young people. The Complaints Manager and Children's Complaints Officer continue to work with the Children in Care Council, Children's Involvement Officer, social care staff and independent advocates to ensure that all children know how to make their voices heard.

A Children In Care Council Conference took place in Summer 2015 and included a complaints workshop run by young people with the support of the Children's Complaint Officer. The target audience was professionals working directly with children and young people. The intention is that this will increase and improve awareness of how to support children and young people to make representations.

The vast majority of complaints are being resolved by Council staff or the Customer Resolution and Information Team at an early stage, preventing the need for resource intensive formal complaint investigations and providing the customer with a timely response. The Department believes that this approach is beneficial to all involved but will conduct a customer feedback survey during 2015 to gain customer views and suggestions for further improvements.

The Customer Resolution and Information Team is commissioning a new IT solution which will enable a wider range of representations to be recorded and reported on to enhance the information available to the department and assist with learning and development.

This page is intentionally left blank

WIRRAL COUNCIL

Children Sub Committee

16th December 2015

SUBJECT:	Post 16 qualifications and the impact on NEETs - update
WARD/S AFFECTED:	All
REPORT OF:	Director of Children's Services
RESPONSIBLE PORTFOLIO HOLDER:	Councillor Tony Smith
KEY DECISION?	No

1.0 EXECUTIVE SUMMARY

- 1.1 Wirral has a complex post 16 education and learning landscape. Wirral young people making the transition at age 16 in to further education and training have a number of options and pathways including, school sixth form, further education (including study programme provision) and Apprenticeships. A good range of post 16 opportunities are accessible locally; however, some young people choose to travel for specialist vocational learning to neighbouring local authorities and beyond.
- 1.2 This report identifies the numbers of young people transitioning in to post 16 learning and training opportunities whilst also assessing how successful they are by pathway. An analysis of learner attainment on entry to post-16 learning (all learning routes) has been completed in addition to valued added performance for some sectors. The report analyses the current local post 16 education and training provision in terms of quality and offer.
- 1.3 Local authority performance in respect of post 16 participation and the duty on placed on the authority in respect of Raising of the Participation Age legislation is good and improving. Levels of young people not engaged in employment, education and / or training (NEET) are the lowest recorded but are being challenged by recent local and national developments. Key challenges adversely impacting on participation include, national qualification reform, national Study Programme requirements, funding rate changes linked to efficiencies, Apprenticeship reform and the Education Funding Agency (EFA) free market approach to post 16 provision.
- 1.4 It is vitally important that young people are well prepared for the transition in to adulthood and post education and employment. The roll of schools in providing impartial and robust careers education, information, advice and guidance in critical. Post 16 participation rates will only continue to improve if young people are informed and equipped to plan their career pathway whilst having a comprehensive understanding of what the jobs of the future will demand of them.

1.5 The quality post 16 education provision in Wirral is general good with a number of institutions and colleges delivering outstanding levels of learner academic and vocational curriculum attainment. Outstanding provision at a headline level; particularly in the school sixth form sector, masks levels of under performance demonstrated by some small school sixth form provisions though. It is hoped that the current local authority review of sixth form provision will begin to help shape an improved provision map.

2.0 BACKGROUND AND KEY ISSUES

2.1 Young people's participation rates in the borough are currently in line with Children's Trust 2015 Raising Participation Age targets at 92.9 percent (June 2015). Improvement needs to be made, however, if we are to ensure our young people, aged 16 to 19, participate at levels similar to those experienced regionally and nationally. To support this schools and academies must meet their statutory duty to provide robust careers education, information, advice and guidance. The Council must also ensure there is sufficient and suitable education and training provision to meet young people's needs.

2.2 Since 2010 the government's approach to the school, FE and work based learning sectors has been one of greater autonomy and freedom for providers to tailor their provision offer to meet local demand. This has been accompanied by a move to a further education funding regime based on learner numbers. Statutory duties for ensuring the sufficiency and quality of provision and raising participation in education, employment and training lie with local authorities.

2.3 The national perspective of what is required of the education of young people beyond the age of 16 has changed significantly over recent years, and is continuing to evolve. There has been a fundamental national reappraisal of the purpose of post-16 education and training, driven by three key factors, namely,

- a. There is a national aim to increase the academic and vocational challenge in qualifications attained by post-16 students as part of their study programmes, and to thus improve the worth of their studies. In particular there has been a focus on increased rigour in qualifications, testing, and an emphasis on improving students' future employability through additional maths, English and work experience.
- b. The requirement for young people to participate in education and training was raised to the age of 17 from September 2013, and will rise again to the age of 18 in 2015. There is a commonly held view that we need to improve the abilities and increase the aspirations of young people through continuing education, whether their next steps are in higher education, training or employment.
- c. There is an economic need to increase the number of young people receiving technical and vocational education to meet the demands of the future workforce. This demand is driven by a significant future need for new employees to replace those leaving an ageing workforce, and also the need for additional employees to meet the demands of economic growth. There is a political consensus that there should be an expansion in the number of young people taking apprenticeships and following work related education that is valued by Higher Education and/or Employers. This is necessary not only to meet labour market demands, but also to improve the employability of young

people and thus reduce the current high levels of unemployment amongst young people.

2.4 The Department for Business, Innovation and Skills (BIS) recently published their intentions and policy in terms of local areas reviewing their post 16 provision in the context of a tight fiscal environment. There is a clear drive to move towards fewer, often larger, more resilient and efficient providers of post 16 education.

2.5 In addition to the national changes impacting on the roll and positioning of post 16 education there are also a number of substantial national developments which are influencing and shaping current and future services / delivery. The national influences having the greatest impact include:-

- Qualifications are changing to become more demanding in the areas of both academic and vocational education. It is intended that institutional accountability becomes more rigorous across all types of provider through changes in performance measures and the procedures used in inspection.
- The funding of sixth form education has declined significantly, and is expected to continue declining in the foreseeable future.
- There are new providers emerging in post-16 education. Whilst they bring additional choice and diversity to the sector, they can add to the competition for students amongst established providers of post-16 education.

2.6 Locally, post 16 participation rates are good with some 92.9% (adjusted figure as at June 2015) of the 16 to 18 cohort (11,409 young people) participating in some form of employment, education and training (EET). The proportions of Wirral young people not in employment, education and / or training (NEET) have, for the last 12 months, been the lowest ever recorded. The local authority NEET national indicator, published March 2015, detailed the average NEET (adjusted) to be 4.3 percent.

2.7 Analysis of Client Caseload Information Suite (CCIS) data (June 2015) illustrates the proportions of young people that access the key types of local post 16 education and training provision. This analysis is detailed below in table 1.

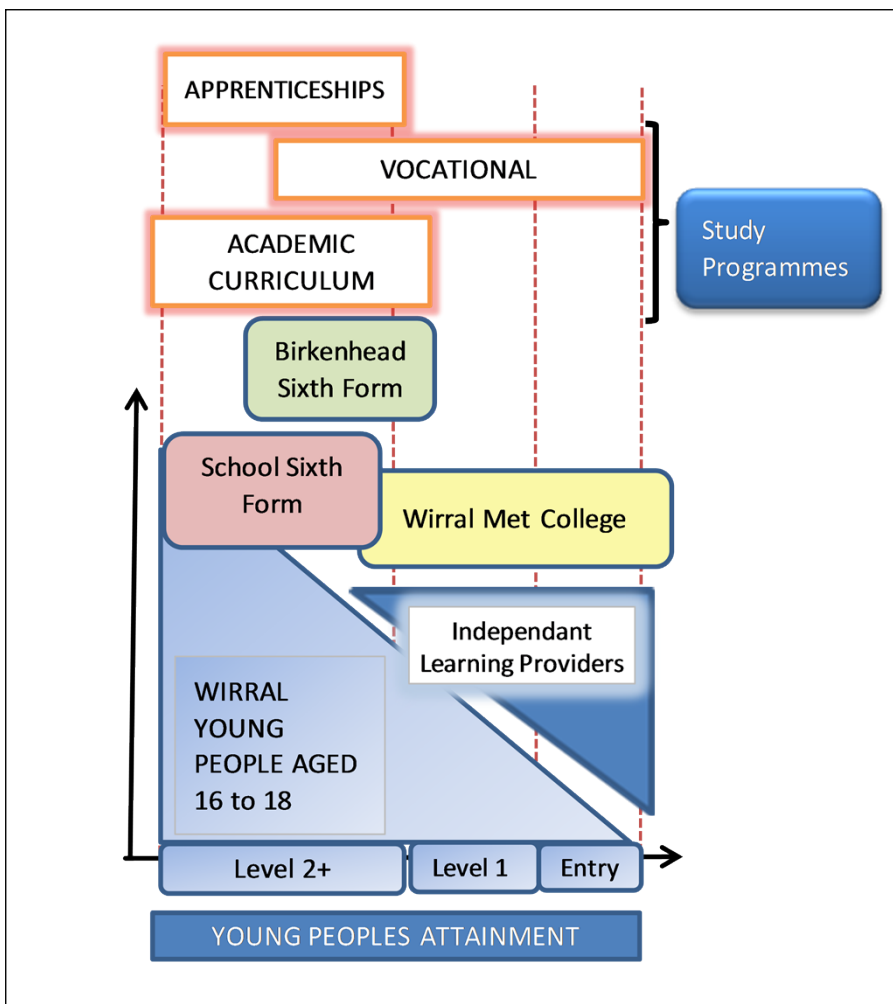
Table 1. Wirral Resident Participation - Young People aged 16 to 18 as at June 2015.

	Yr 12	Yr 13	Yr 14	NCCIS Cohort	% (adjustment applied)
Cohort total	3648	3880	3881	11409	
EET Total	3490	3647	3464	10,600	92.9%
i. of which in education, post Year 11 (includes FE and SSF)	3167	3046	2459	8672	83.9%
ii. of which in Employment	195	415	778	1388	13.4%
a. of which in Apprenticeships	158	290	402	850	8.2%
iii. Training	85	111	72	268	2.6%
EFA funded Work Based Learning	58	85	40	183	1.7%
NEET Group	94	144	201	440	4.0%
Current situation not known	107	163	383	653	5.7%
RPA Participating in EET	93.8%	90.2%			
Meeting RPA the Duty	93.9%	90.3%			

(Source: DfE, NCCIS, June 2015)

2.8 Diagram 1. below illustrates, in general terms, how the current mainstream Education Funding Agency and Skills Funding Agency post 16 provision meets the needs of young people locally. The diagram illustrates that the highest attaining young people at age 16 generally progress in to schools sixth form provision at a grammar school. Moving down the attainment continuum provision is offered at the sixth form college and other secondary schools. The majority of young people choosing vocational options do so at Wirral Met College where the specialist resources exist. Some schools through their sixth form offer are also offering increasing volumes of vocationally related qualifications. Those more vulnerable young people with a lower level of academic achievement will access first steps provision at an independent learning provider as a stepping stone to further education and / or training. GCSE maths and English are key components of all study programmes, particularly for those young people that have not achieved a grade A* to C.

Diagram 1. An illustration of how Government funded post 16 education and training provision meets the needs of young people locally.



2.9 DATA ANALYSIS

2.10 Sixth Form Provision in Wirral Schools and Academies

Analysis of the key headline data illustrates the following key features of how well Wirral young people achieve:-

- 2014 performance at Key Stage 4 is extremely variable across the borough. Wirral has some of the best performing institutions nationally at key stage 4. However; in 12 schools / academies (48 percent) fell below and in some circumstances significantly below national averages.
- There are currently 19 schools (a mix of maintained, academy and independent) with a post 16 offer. In 2014 performance at Key Stage 5 in school sixth forms across academic and vocational programmes is very variable. Wirral has some of the best Key Stage 5 academic provision nationally. Analysis of DfE performance data shows that 12 schools (63 percent) had 2014 level 3 attainment levels at or above national averages. That said, 7 schools (37 percent) fell below 2014 level 3 national averages. A further two schools illustrated under performance in either academic or vocational qualifications.
- Ten (53 percent) of Wirral schools / academies had a sixth form provision in 2014 with less than 200 young people on roll aged 16 to 18.
- There is a strong correlation between post 16 institutions with pupil numbers in excess of 200 and good outcomes for young people.
- Analysis of DfE Level 3 progress measures (value added) illustrates that 74 percent of secondary schools ensure their pupils make at least expected levels of progress at level 3 in academic and / or vocational qualifications. 26 percent of schools (5x schools) have statistically significant negative overall academic qualification progress scores. Only one school has a positive academic progress measure score. In terms of vocational level 3 qualifications no schools have statistically significant negative scores. Three schools (16 percent) have statistically positive progress measure scores.
- Analysis of the 2014 local authority ALPS A-level value added report brings a further level of intelligence. Key messages include:
 - Between 2012 and 2014 average A-level value added for the borough is at the 40th percentile nationally. The average GCSE grade held by Wirral young people entering A-level provision is grade 'B' (6.2 / 6.3 QCDA points).
 - Between 2012 and 2014 the average A-level value added for 42 percent of schools (8 schools) was between the 10th and 25th percentile nationally.
 - A-level value added (measured as UCAS points per exam entry) for learners with high average GCSE grades at the end of key stage 4 (A*-A) is low. Wirral position is 10th to 24th percentile nationally.

2.11 Wirral Further Education and Independent Learning Provider (ILP) Performance. Analysis of the key headline data illustrates the following key features of how well Wirral young people achieve:-

- Number of young people aged 16 to 18 attend Wirral Met College have increased over the last three years to 1,771 in 2014. Outcomes (success rate methodology) for young people attending the College are in line with national averages at 83.1 percent (level 3 2013/14).

- The numbers of young people accessing post 16 education at the Birkenhead Sixth Form College increased by 23 between 2013 and 2014 to 1,210. Success rates for long level 2 programmes has improved year on year and is above national averages. Level 3 long programme success rates have also improved year on year. Provisional 2015 success rates illustrate a further improvement with success rates anticipated to be well within the top 10 percent of all sixth form colleges at 89.96%.
- Wirral young people attending independent learning providers (ILPs) for study programme curriculum are generally those working at entry level / level 1 and are aspiring to level 2. Wirral has a core of five locally based ILPs and the Greater Merseyside Learning Providers Federation that fund local providers to deliver study programmes on their behalf on a sub contracted basis.
- ILP success rate performance is variable with little consistency. Success rate performance at some providers is below national averages. The Vocational College, however, was reported nationally (FE weekly, May 2015) as one the country's top three performing ILPs in 2014 in terms of success rates.

2.12 Table 2. below contains information relating to Wirral young people participating in Apprenticeship provision. The key headlines of the analysis include:-

- The numbers of Wirral young people aged 16 to 18 participating in Apprenticeship provision has been declining year on year from a very high baseline.
- As an indicator of the quality and achievement rates of young people; success rates at level 3 have improved over the last three years (+5.9 percentage) and are 5.3 percent above the national average. Level 2 intermediate Apprenticeship success rates have however declined year on year and are -7.7 percent below the national average (2014).

Table 2. Wirral 16-18 Apprenticeship Participation and Success Rates

Year	Level	2012	2013	2014
Learner volume (leavers)	2 (intermediate L2)	920	610	450
	3 (advanced L3)	240	230	170
Success Rates	2 (intermediate L2)	75.1	61.4	61.8
	3 (advanced L3)	74.4	70.9	80.3
National Average	2 (intermediate L2)	71.9	69.7	69.5
	3 (advanced L3)	76.5	75.9	75.0

(Source: Skills Funding Agency, Apprenticeship Success Rate Reports)

2.13 OFSTED AND POST 16 EDUCATION AND TRAINING QUALITY

2.14 **Sixth Form Provision.** As at June 2015 26 percent (5 schools) of sixth form provision has a current grade 3 - requires improvement. In summary, Ofsted highlighted the following key themes in terms of local school sixth forms requiring improvement:-

- i. Pupil attainment consistently below average.
- ii. Pupils not making good progress from their starting points.
- iii. Courses not well matched to pupils prior attainment levels.

2.15 **Further Education College Provision.** As at June 2015 both further education colleges are graded as overall good. Ofsted inspections at Birkenhead Sixth Form College and Wirral Met College were carried out in December 2012 and May 2010 respectively. Wirral Met College are due for an inspection in 2015/16.

2.16 **Private independent learning providers (ILP).** Table 3. Below illustrates the current overall inspection grades for Wirral’s core ILPs. Post 16 ILP provision is therefore in the main ‘good’ with only Rocket Training requiring improvement.

Table 3. Independent Learning Provider Ofsted Inspection Grades

Wirral Based Independent Private Provider	Latest Inspection Date	Overall Grade
Greater Merseyside Provider Federation	April 2013	Good - 2
Morthyng Vocational College	October 2014	Good - 2
Oakmere Community College	March 2012	Good - 2
Rocket Training Ltd	November 2014	Requires Improvement - 3
SHAW TRUST LIMITED (THE)	February 2012	Good - 2
The Vocational College Limited	June 2015	Good - 2

(Source: Ofsted Website, July 2015)

2.17 LEARNER DESTINATIONS

2.18 Annually the Department for Education tracks and publishes data relating to the relevant proportions of young people that successfully transition in to post 16 destinations at an institution and local authority level. This measure forms one the key performance indicators used by Ofsted in determining the quality careers guidance provided by schools / academies plus a measure of performance in respect of education and training provision at key stage 4 and 5.

2.19 2012/13 Key Stage 4 and 5 learner destination measure performance compares well against the national averages – see table 4 below:-

Table 4. 2012/13 Key Stage 4 and 5 Learner Destination Measure Performance

		Cohort size	% of YP in Employment, Education, Training (EET)	% of YP in Education	% that do not sustain their destination
Key Stage 4	Wirral	3,690	93%	91%	5%
	England		91%	89%	6%
Key Stage 5	Wirral	1,640	81%	73%	3%
	England		71%	64%	2%

(Source: DfE, January 2015)

		FSM EET	Not FSM EET	% Gap
Key Stage 4	Wirral	85%	94%	9%
	England	83%	92%	9%
Key Stage 5	Wirral	82%	84%	2%
	England	77%	77%	0%

(Source: DfE, January 2015)

2.20 Key points to note include:-

Key Stage 4 (at age 16).

- i. Overall positive destinations (92%) equal to or better than national and NW averages.
- ii. Significantly higher proportion of young people stay on in sixth form provision (54%).
- iii. Sixth Form College and Apprenticeships destinations – similar to national.
- iv. Proportion of young people transitioning to the FE College is much less than national average (19% vs 34%).
- v. 5% destination not sustained similar to national / regional.

Key Stage 5 (at age 18).

- i. Transition to EET is higher than national average at 84%.
- ii. A higher proportion go in to the FE College (9%) compared to national (6%).
- iii. 27% of young people get in to the top third of HEI's (higher than national and NW).
- iv. Overall the proportion of young people transitioning in to a HEI is similar to national / NW.

2.21 TRAVEL TO LEARN PATTERNS

2.22 Annually a significant volume of young people travel outside of the borough for further education provision. In 2013/14 28 percent (or 1,159 young people) of Wirral resident young people accessing further education did so at providers and colleges outside of the borough.

2.23 The draw effect of out of borough school sixth form provision is less with only 5.2 percent (201 young people) of school sixth formers travelling outside of Wirral. Of the 202 young people 67 percent travel outside of the borough to attend Neston High School in Cheshire West.

2.24 Inward migration of young people from other local authority areas. In 2013/14 193 (5.7 percent) young people travelled from outside of the Wirral to attend Wirral based FE institutions. A similar proportion (5.0 percent or 196 young people) travelled in to Wirral for school sixth form provision. The numbers of young people traveling in to the borough from Cheshire West and Chester is increasing year on year. In 2014/15 199 learners travelled in to Wirral for school sixth form provision, an increase of 14 percent based on 2013/14 statistics.

Table 5. Wirral resident out of borough education placement numbers

Institution Data Type	Learning Local Authority	Resident Learner Numbers		
		2012/13	2013/14	2014/15
Further Education College / Independent Private Provider	Cheshire East	144	154	113
	Cheshire West and Chester	153	140	137
	Halton	4	1	8
	Knowsley	42	70	70
	Lancashire	30	8	7
	Liverpool	856	745	574
	Sefton	43	35	22
	St Helens	3	6	3
	Wirral	2,914	2,995	2,835
School Sixth Form Provision	Cheshire East	1	1	
	Cheshire West and Chester	144	137	122
	Knowsley	1	1	1
	Liverpool	15	57	99
	Sefton	1	5	4
	St Helens	1		1
	Wirral	3,863	3,701	3,682
		8,215	8,056	7,678

(Source: Education Funding Agency, July 2015)

- 2.25 Significant variation exists in terms of the qualification success of young people that travel and access learning outside of the borough. Table. 6 below illustrates the qualification success rates across the different learning sectors for young people staying and learning in the borough and those that learn outside of the borough. The data illustrates how when you factor in the success rates for young people access learning outside of the borough there is a drop in overall Wirral young people's global success rates.

Table 6. Comparison of 16 to 18 In and Out of Borough Learning Success Rates

Learning Sector	Success rates for 16-18s learning in borough	Success rates for 16-18s learning in borough and outside of the borough
ALL sectors	79.5%	78.2%
Sixth Form College	86.2%	86.3%
Further Education College	79.7%	78.0%
Independent Learning Provider	57.2%	54.5%

(Source: Skills Funding Agency, July 2015)

2.26 SUMMARY OF KEY FINDINGS

- 2.27 In summary, locally the post 16 provider base exhibits the following key positive attributes but also includes significant areas for strategic support and challenge:-

- i. Annually huge variation exists in terms of outcomes for young people at Key Stage 4 at a school / academy level. Opportunities and post 16 progression pathways for those more vulnerable young people who do not achieve A* to C

- GCSE (including English and maths) and / or the equivalent of a full level 2 is limited. Constraints in terms of the Study Programme Curriculum linked to substantial qualification aims and the requirement to enrol on English and maths GCSE qualifications can be seen as a barrier or restriction for more vulnerable young people entering learning.
- ii. Wirral has good overall participation rates but there remains a 'hard core' of NEET young people that increases in size between the ages of 16 and 18 (circa 400 young people).
 - iii. Wirral has a number of small (<200 pupils), underperforming school 6th forms where the curriculum offer is limited and outcomes / learner progress is below national expected levels.
 - iv. The level 2 and 3 attainment inequality gap at key stage 4 and at age 19 is amongst the highest of any local authority area nationally.
 - v. Vocational provision is most effective in the further education college and particularly for those students who have not attained 5 (A*-C) GCSEs at school and go on to study at level 1 or level 2.
 - vi. Over the last three years the number of young people accessing recognised Apprenticeships has reduced even given the Governments strong focus on raising skills and supporting employers. National changes to recognised Apprenticeship framework delivery to drive up quality, including a minimum delivery timescale of 12 months; have negatively impacted on overall participant numbers.
 - vii. Apprenticeship success rates for Apprentices' on level 3 advanced programmes are significantly above national averages.
 - viii. Travel to learn patterns are complex and there exists variation in attainment dependent on whether, as a Wirral resident, you are educated inside or outside of the borough.

3.0 RELEVANT RISKS

- 3.1 Fundamental national challenges in relation to post 16 funding and curriculum reform (including Study Programme) is likely to have a significant negative impact on local post 16 participation and levels of NEET. In the absence of any engagement provision there is the potential for our most vulnerable young people and those furthest from employment and post 16 education, to become further socially isolated and dependant on benefits.

4.0 OTHER OPTIONS CONSIDERED

- 4.1 None

5.0 CONSULTATION

- 5.1 None

6.0 OUTSTANDING PREVIOUSLY APPROVED ACTIONS

- 6.1 None

7.0 IMPLICATIONS FOR VOLUNTARY, COMMUNITY AND FAITH GROUPS

- 7.1 There are currently no implications for voluntary, community and faith groups; however, this may change if the number of hard core NEET young people increases.

8.0 RESOURCE IMPLICATIONS: FINANCIAL; IT; STAFFING; AND ASSETS

8.1 None

9.0 LEGAL IMPLICATIONS

9.1 None

10.0 EQUALITIES IMPLICATIONS

10.1 Has the potential impact of your proposal(s) been reviewed with regard to equality?

(a) Not on this occasion; this report is for information only and responds to the request from elected members for an update.

11.0 CARBON REDUCTION AND ENVIRONMENTAL IMPLICATIONS

11.1 None

12.0 PLANNING AND COMMUNITY SAFETY IMPLICATIONS

12.1 None

13.0 RECOMMENDATION/S

13.1 This report for information only.

14.0 REASON/S FOR RECOMMENDATION/S

14.1 Report for information purposes only; it has been produced as a response to a request for an update from elected members.

REPORT AUTHOR:

Paul Smith
14-19 Strategy Manager

telephone (0151) 666 5254
email paulsmith@wirral.gov.uk

This page is intentionally left blank

WIRRAL COUNCIL

CHILDREN SUB-COMMITTEE

16TH DECEMBER 2015

SUBJECT:	<i>COMMITTEE WORK PROGRAMME</i>
REPORT OF:	<i>THE CHAIR OF THE COMMITTEE</i>

1.0 EXECUTIVE SUMMARY

- 1.1 This report updates members on progress towards delivering the work programme for the Children Sub Committee as agreed for the 2015/16 municipal year. There is also an opportunity for members to review the programme.

2.0 BACKGROUND AND KEY ISSUES

- 2.1 The Children Sub-Committee has developed a work programme in order to prioritise the topics which members want to scrutinise within the remit of the Sub-Committee. This work programme should align with the corporate priorities of the Council and be informed by service priorities and performance, risk management information and public or service user feedback.

3.0 THE WORK PROGRAMME

- 3.1 The work programme could include a combination of scrutiny reviews, standing items and requested officer reports. The current work programme for the Children Sub-Committee is shown on page 4 of the attachment.
- 3.2 One item, which has yet to be scheduled, is shown on the work programme:
- Exception reports highlighting positive and negative aspects arising from school Ofsted inspection reports
- 3.3 Members are requested to propose any further items within the remit of the Sub-Committee for inclusion on the work programme.

4.0 RECOMMENDATIONS

- 4.1 Members are requested to review the work programme for the Children Sub-Committee for the 2015/16 municipal year.

REPORT AUTHOR: Alan Veitch
Scrutiny Support
0151 691 8564
email: alanveitch@wirral.gov.uk

This page is intentionally left blank

2015-16 Families and Wellbeing Policy & Performance Committee - Work Programme

Updated - 02/12/2015

(including Children Sub-Committee and the Health & Care Performance Panel)

Key Activities	Lead Member / Officer	Reason for Review	May 2015	June 2015	July 2015	Aug 2015	Sept 2015	Oct 2015	Nov 2015	Dec 2015	Jan 2016	Feb 2016	Mar 2016	April 2016	Outcome
Committee Dates				Tues 30th			Tues 8th		Mon 2nd	Tues 1st	Tues 19th		Tues 8th		
Scheduled Reviews															
Safeguarding Children	Cllr Moira McLaughlin	Agreed by P&P Committee on 5th Dec 2013									Committee report due				Commenced July 2014. To complete.
Reducing hospital admission and dependency on nursing and residential home for older people (To be known as the Avoiding Admissions review)	Cllr Moira McLaughlin	Agreed by P&P Committee on 2nd February 2015													12/08/14 - Spokespersons agreed to prioritise this review for early 2015. 02/02/15 - Committee agreed to establish a Task & Finish Group to work during the 2015/16 municipal year.
Children ready for school		Agreed by P&P Committee on 20th March 2015													
Budget options	Cllr Moira McLaughlin	Part of the Council's budget process													
Wirral Plan - Development of delivery plan	Cllr Moira McLaughlin	Proposed by Spokespersons, 21st July													Workshops held in November 2015. Report to Coordinating Committee on 10th December 2015.
Impact Report from previous In-depth Reviews															
Learned After Children Review															Committee (02/12/14) requested future progress report in Dec 2015
Implications of the Francis Report for Wirral															12/08/14 - Spokespersons agreed to refer this item to the Health & Care Performance Panel. A report was presented to the Panel on 20/10/14. Future updates will be provided.
Quality Assurance and Standards in Care Homes															12/08/14 - Spokespersons agreed to refer this item to the Health & Care Performance Panel. A report was discussed by the Panel on 19/11/14. Future updates will be provided.
Reports Requested to Committee															
School Traded Services - proposed changes to service delivery	Clare Fish / David Armstrong														Committee (02/12/14) requested future progress updates, which will be provided in 2015/16 municipal year.
Safeguarding Children Annual Report 2014/15	Simon Garner														Complete
All-age Disability Strategy	Julia Hassall / Graham Hodkinson														
Child Poverty Strategy - update	Julia Hassall														Committee (02/02/15) requested future updates re effectiveness of the child poverty strategy.
Disability service for children: budget option - progress report	Julia Hassall	Agreed by Spokespersons, 24th Feb 2015													Deferred from 2014/15 municipal year
CRI - Follow-up from Spotlight session on 21st Jan 2015															01/10/15 - Spokespersons agreed to refer this item to the Health & Care Performance Panel.

Key Activities	Lead Member / Officer	Reason for Review	May 2015	June 2015	July 2015	Aug 2015	Sept 2015	Oct 2015	Nov 2015	Dec 2015	Jan 2016	Feb 2016	Mar 2016	April 2016	Outcome
Public Health Annual Report - 2014	Fiona Johnstone	Agreed by Spokespersons, 4th June 2015													Complete
Draft protocol to promote more effective working between Health & Wellbeing Board, Healthwatch and health scrutiny	Clare Fish	Agreed by Spokespersons, 4th June 2015													Draft protocol approved by F&W P&P on 30/07/15. Also approved by Healthwatch board. Awaiting approval from Health & Wellbeing Board
Healthwatch Wirral - update (including Annual Report)	Karen Prior														
Day centres and the establishment of Wirral Evolutions - progress report	Chris Beyga	Agreed by P&P Committee, 8th Sept 2015													Complete
Childcare Bill - update	Julia Hassall	Agreed by Spokespersons, 3rd Sept 2015													01/10/15 - Spokespersons agreed to remove this item from the work programme.
Adults Safeguarding Annual Report	Bernard Walker / Simon Garner	Agreed by Spokespersons, 1st October 2015													
Meeting the housing needs of vulnerable people	Graham Hodgkinson / Ian Platt	Agreed by Spokespersons, 1st October 2015													
Impact of the reduction in funding for public health	Fiona Johnstone	Agreed by Spokespersons, 1st October 2015													
Reports to be distributed to Members for information															
Fostering Annual Report	Julia Hassall / Simon Fisher														Outstanding
Adoption Annual Report	Julia Hassall / Simon Fisher														Outstanding
Health & Wellbeing Strategy	Fiona Johnstone														
Local Government Declaration on Tobacco Control - update	Julie Webster	Agreed by Spokespersons 7th January 2014													Complete
Referrals from other Committees															
NOM - Local Government Declaration on Tobacco Control	Fiona Johnstone	Agreed by P&P Committee 28th Jan 2014													Member's briefing produced. Complete
NOM - Becoming a 'Dementia-friendly' Council	Proposed: Cllr Tom Anderson; Seconded: Cllr Tracey Smith	Referred from Council, 14th July 2014													Complete
NOM - Mental Health Challenge	Proposed: Cllr Tom Anderson; Seconded: Cllr Lesley Rennie	Referred from Council, 6th July 2015													Complete

Key Activities	Lead Member / Officer	Reason for Review	May 2015	June 2015	July 2015	Aug 2015	Sept 2015	Oct 2015	Nov 2015	Dec 2015	Jan 2016	Feb 2016	Mar 2016	April 2016	Outcome
Standing Items															
Performance Dashboard															
Financial Monitoring															
Policy Inform - Update															
Budget scrutiny															
Focus On.....' Sessions															
Vanguard Project	John Develing / Jo Goodfellow / Clare Fish	Proposed by Spokespersons 4th June 2015			20th										Complete
All-age Disability Service	Clare Fish / Julia Hassall / Graham Hodgkinson	Proposed by Spokespersons 4th June 2015													01/10/15 - Spokespersons agreed to remove this item from the work programme.
Wirral Community Trust: update on service delivery	Karen Howell / Sandra Christie	Agreed by Spokespersons, November 2015									????	????			Date to be arranged
Mental Health	Clare Fish	Proposed by Spokespersons 4th June 2015													Date to be arranged in 2015/16 municipal year
Proposed implementation of the Care Act 2014	Graham Hodgkinson	Proposed by Spokespersons 4th June 2015													Date to be arranged in 2015/16 municipal year
Health Inequalities	Fiona Johnstone	Proposed by F&W P&P Committee 8th July 2014													Date to be arranged in 2015/16 municipal year

Key Activities	Lead Member / Officer	Reason for Review	May 2015	June 2015	July 2015	Aug 2015	Sept 2015	Oct 2015	Nov 2015	Dec 2015	Jan 2016	Feb 2016	Mar 2016	April 2016	Outcome
Children Sub-Committee															
Sub-Committee meetings							23rd			16th			30th		
Early Years and Children's centres / 'Giving Wirral children the best start in life'	Julia Hassall / Deborah Gornik	Officer report prior to possible task and finish work													
School standards report regarding outcomes for Key Stage 1, Key Stage 2, GCSE and A Levels, including impact on 'narrowing the gap'	Deborah Gornik / Sue Talbot	Officer report requested													
Children social care reorganisation	Julia Hassall / Lisa Arthey	Officer report requested													
Exception reports highlighting positive and negative aspects arising from school Ofsted inspection reports	Deborah Gornik / Sue Talbot														
Complaints report for Children's Services	Julia Hassall / Simon Garner	Agreed by Spokespersons, 1st October 2015													
School standards report - attainment at GCSE and A Level: 2015	Sue Talbot	Agreed by Spokespersons, 1st October 2015													
Post 16 qualifications and the impact on NEETs	Julia Hassall	Agreed by Spokespersons, 1st October 2015													
Outcomes of the Wirral Council Ofsted inspection (if available)	Julia Hassall	Agreed by Spokespersons, 1st October 2015													
Visits to both high performing and under-performing schools in terms of attainment.		Proposed by Children Sub-Committee , 23/09/15													Visits to be arranged
Special Guardianship Orders		Proposed by Chair, 30/11/15, as a result of the Safeguarding scrutiny review													
Governance arrangements and role of scrutiny in safeguarding		Proposed by Chair, 30/11/15, as a result of the Safeguarding scrutiny review													

Page 55

Key Activities	Lead Member / Officer	Reason for Review	May 2015	June 2015	July 2015	Aug 2015	Sept 2015	Oct 2015	Nov 2015	Dec 2015	Jan 2016	Feb 2016	Mar 2016	April 2016	Outcome
Health & Care Performance Panel															
Panel meetings						20th	28th		25th		12th		16th		A meeting to review the draft Quality Accounts of health partners is scheduled for Tues 10th May 2016
Care home and domiciliary care – performance report (Amanda Kelly)	Amanda Kelly	Proposed by H&CPP, 19/11/14													
The impact of changes to Out of hospital services	Jacqui Evans	Proposed by H&CPP, 01/04/15													
Preparations for winter pressures	Jacqui Evans	Proposed by H&CPP, 01/04/15													
Quality framework and performance measures for the health sector in Wirral	Lorna Quigley	Standard agenda item													
Feedback from Quality Surveillance Group	Lorna Quigley	Standard agenda item													
Francis Scrutiny review – review of recommendations	Lorna Quigley, Jill Galvani, Alan Veitch	Proposed by H&CPP, 20/10/14													
Care Homes Scrutiny Review – review of recommendations	Amanda Kelly	Proposed by H&CPP, 19/11/14													
Social care complaints report, to include domiciliary care	David Jones	Proposed by H&CPP, 04/02/15											???		
WUTH: Follow-up report relating to issues arising from the CQC action plan (Sept 2014)	Jill Galvani, Evan Moore, Jean Quinn	Proposed by H&CPP, 01/04/15													
WUTH: Follow-up report relating to issues arising from the Best Improvement Plan	Anthony Hassall	Proposed by F&W P&P Committee, 02/02/15													P&P Committee (02/02/15) requested future updates
WUTH: Follow-up report relating to issues arising from A&D targets		Proposed by F&W P&P Committee, 02/02/15													
The implementation of the Better Care Fund (H&CPP, 01/04/15)	Jacqui Evans	Proposed by H&CPP, 01/04/15													01/10/15 - Spokespersons agreed to remove this item from the work programme.
CQC inspection report for Cheshire & Wirral Partnership Trust (Inspection of June 2015)		Proposed by H&CPP, 20/08/15													To be arranged - once the report is available
Drug and alcohol service / CRI - performance update	Julie Webster / Gary Rickwood + CRI	Agreed by Spokespersons, 1st October 2015													
CQC inspection report for WUTH (Inspection of Sept 2015)		Agreed by Spokespersons, 1st October 2015													To be arranged - once the report is available
WUTH: incidents of infection rates		Proposed by H&CPP, 25/11/15													
Macular degeneration		Agreed by Chair, 25/11/15													
Continuing Healthcare funding	Karen Prior - Healthwatch	Proposed by F&W P&P Committee, 01/12/15													
Improving people's experience of integrated care (service user experience questionnaire) - Performance Indicator ADDP13		Proposed by F&W P&P Committee, 01/12/15													
Member visits to CRI services		Proposed by H&CPP, 25/11/15													Visits to be arranged

This page is intentionally left blank